



GAT MONTHLY MEMBERSHIP PROGRESS REPORT

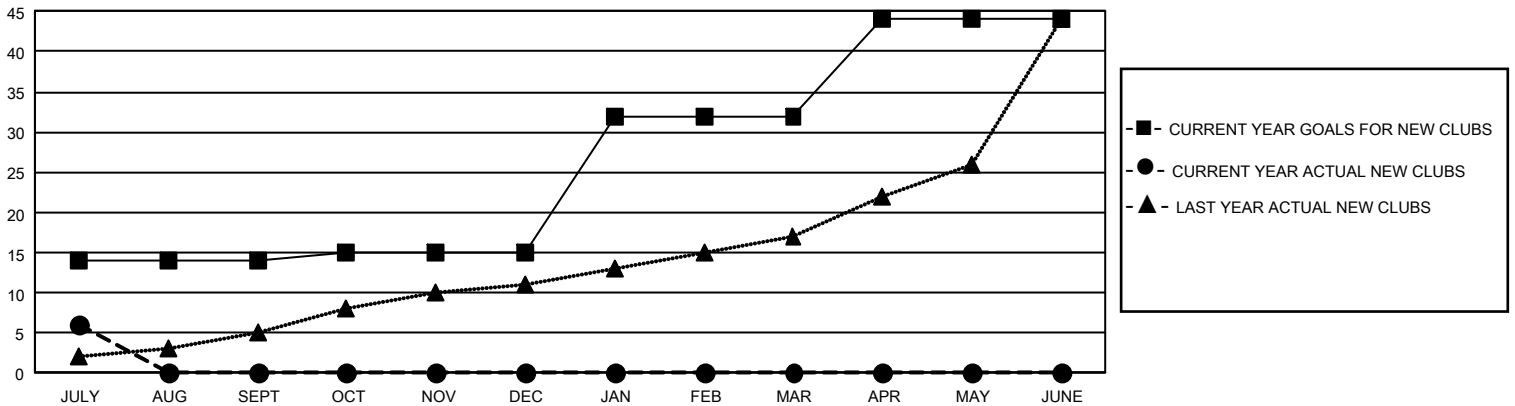
Results as of: 7/31/2025

GMT Constitutional Area 3, Group C

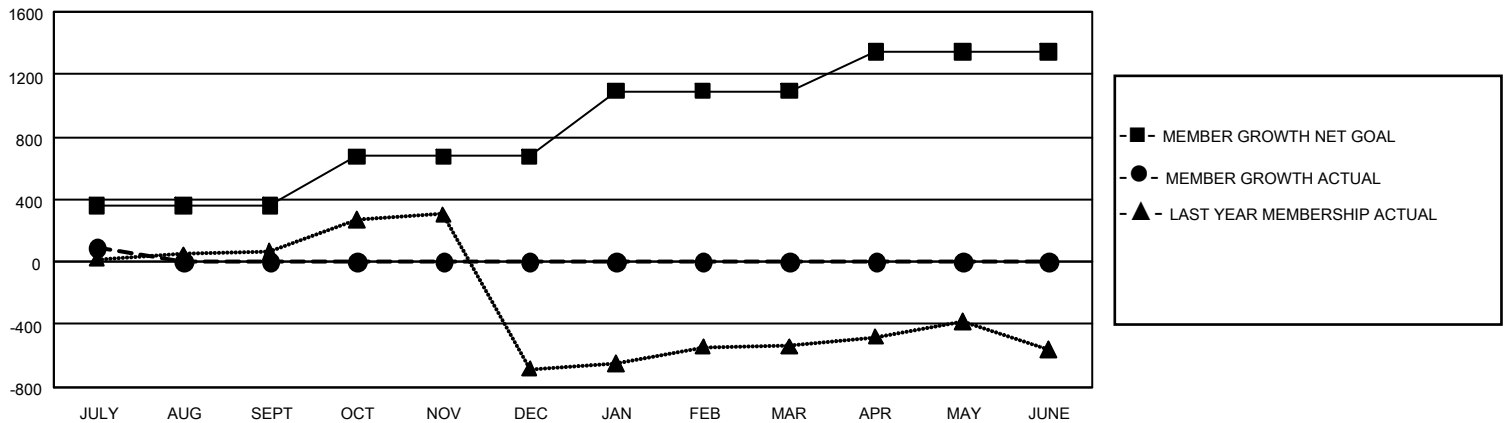
REPORT DOES NOT INCLUDE CLUBS IN UNDISTRICTED AREAS.

Clubs				Members			
RESULTS FOR 2025-2026				RESULTS FOR 2025-2026			
QUARTER	NEW CLUB GOAL	NEW CLUBS	DROPPED CLUBS	QUARTER	MEMBER GROWTH NET GOAL	MEMBER GROWTH ACTUAL	DROPPED MEMBERS ACTUAL (including transfers)
JULY/AUG/SEPT	42	6	3	JULY/AUG/SEPT	361	343	198
OCT/NOV/DEC	3	0	0	OCT/NOV/DEC	315	0	0
JAN/FEB/MAR	51	0	0	JAN/FEB/MAR	416	0	0
APR/MAY/JUNE	36	0	0	APR/MAY/JUNE	252	0	0

GOALS AND ACTUAL NEW CLUBS CUMULATIVE



GOALS AND ACTUAL MEMBERS CUMULATIVE



DROPPED CLUBS: 3

82 CLUBS OF 742 ADDED 1 OR MORE NEW MEMBERS

GENDER DISTRIBUTION

MALE	7,374 (48.20%)
FEMALE	7,914 (51.73%)
NON BINARY	1 (0.01%)
PREFER NOT TO ANSWER	11 (0.07%)

DROPPED MEMBERS

DECEASED	11
CLUB CANCELLED	49
OTHER	136
TOTAL	196

[CLICK HERE FOR CUMULATIVE MEMBERSHIP DATA](#)

TOTAL FAMILY UNIT MEMBERS 5,506

FAMILY MEMBERS PAYING HALF DUES 3,273